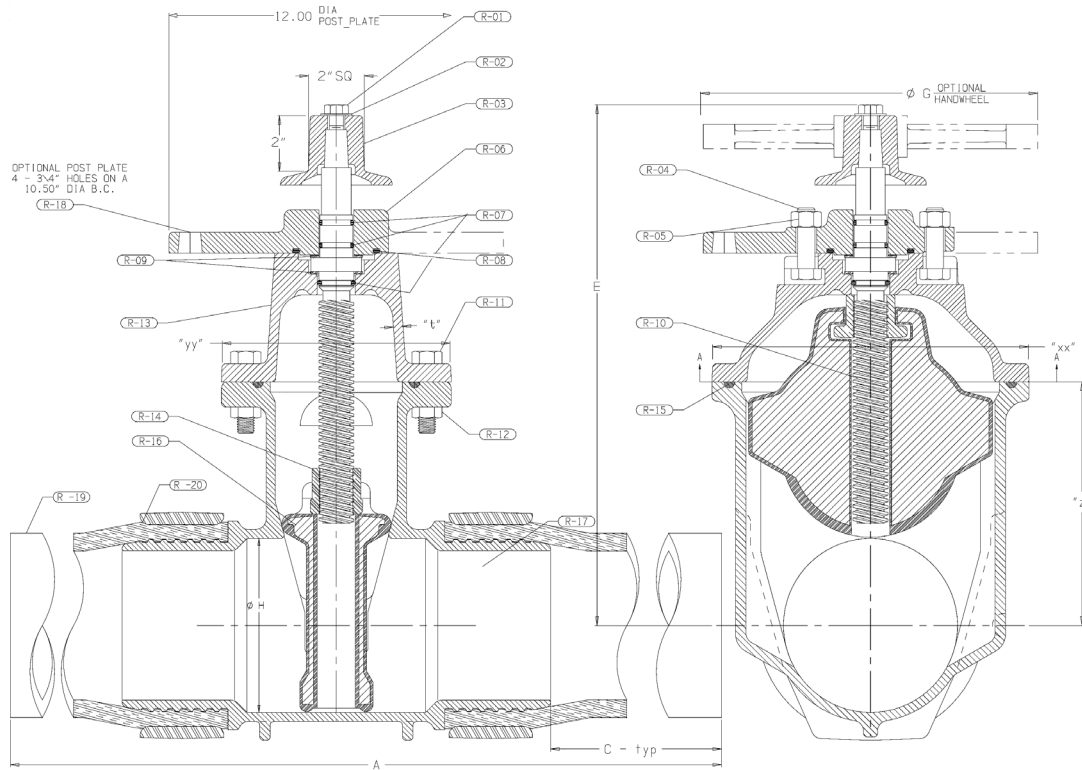




KENNEDY VALVE

MODEL HDPE - NRS ASSEMBLY

SIZES 2"-12" AWWA C515

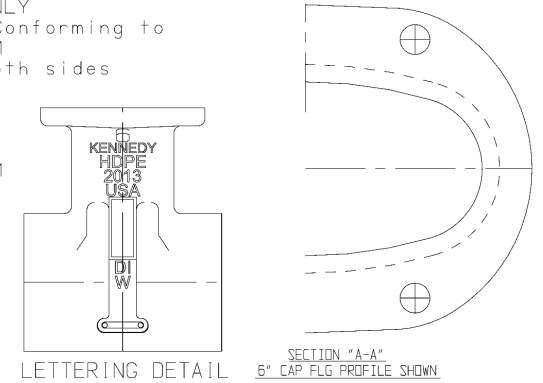


DIMENSIONS											
Nominal Size	Seat Dia ØH	No. of Turns to Open	A	C	E	ØG	Assembled Weight	Wall Thickness	XX	YY	Z
2	2.00"	5	40.8"	16.0"	10.88"	7.25"	31 lb	0.34	6.00	6.25	4.25
3	3.00"	10	42.0"	16.1"	12.38"	10.00"	50 lb	0.34	7.50	6.75	5.09
4	4.25"	13	41.6"	15.2"	14.75"	10.00"	76 lb	0.44	9.50	7.00	6.00
6	6.25"	19	43.8"	14.1"	19.00"	12.00"	134 lb	0.44	12.00	8.00	8.75
8	6.25"	25	44.8"	13.3"	22.50"	14.00"	221 lb	0.50	14.88	9.00	10.38
10	10.25"	31	47.6"	12.4"	26.50"	18.00"	396 lb	0.63	18.38	10.75	12.13
12	12.25"	37	46.8"	11.6"	30.00"	18.00"	566 lb	0.69	20.81	12.25	14.13

COATING: EPOXY
(HEAT FUSED)
TO MEET APPLICATION & PERFORMANCE
REQUIREMENTS AWWA C550
TO HAVE BEEN TESTED &
ACCEPTED BY UL/FM

Tests, VALVE ONLY
Per Protocols Conforming to
AWWA, UL and FM
Seat 300 psi both sides
Shell 500 psi

Utilization:
For Water to
160°(F) MAXIMUM



ITEM	PART NAME	MATERIAL	QTY
R-1	Hex. Head Bolts	18-8 Stainless Steel, ASTM F593C	1
R-2	Flat Washer	Steel, Plated	1
R-3	Operating Nut	Cast Iron ASTM A-126 Class B	1
R-3	Handwheel	Cast Iron ASTM A-126 Class B	1
R-4	Stuffing Box Bolts	18-8 Stainless Steel, ASTM F593C	2
R-5	Hex. Nuts	18-8 Stainless Steel, ASTM F594	2
R-6	Stuffing Box	Ductile Iron ASTM A-536	1
R-7	O-Ring (Stem)	Buna-N	3
R-8	O-Ring (St. Box)	Buna-N	1
R-9	Thrust Washer	Delrin	1 (2" & 2.5") 2 (3"-12")
R-10	Stem	Bronze ASTM B584 C86700 (STD) or Bronze NDZ ASTM B763 C99500 or 304 Stainless Steel ASTM A479	1
R-11	Hex. Head Bolts	18-8 Stainless Steel, ASTM F593C	---
R-12	Hex. Nuts	18-8 Stainless Steel, ASTM F594	---
R-13	Cover	Ductile Iron ASTM A-536 (70-50-5)	1
R-14	Stem Nut	Bronze ASTM B-763 C99500	1
R-15	O-Ring (Cover)	Buna-N	1
R-16	EPDM Encapsulated Wedge	Ductile Iron ASTM A-536 (70-50-5) EPDM Resilient Molded Wedge	1
R-17	Body	Ductile Iron ASTM A-536 (70-50-5)	1
R-18	(Optional) Post Adaptor Plate	Cast Iron ASTM A126 Class B	1
R-19	HDPE Nipple	HDPE (4710 Resin) to AWWA C905, complies with ASTM F714, NSF61 certified	1
R-20	Compression Ring	Ductile Iron	1