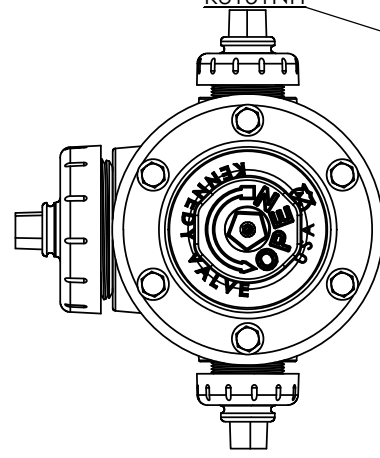
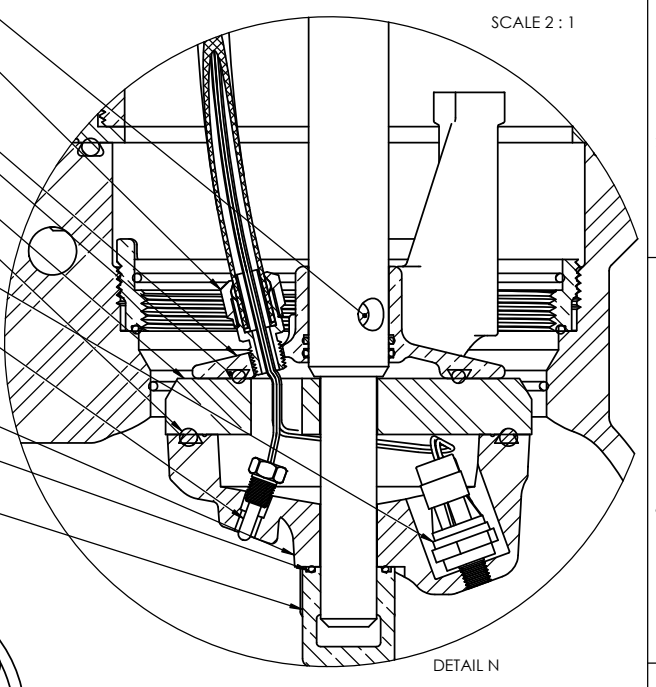
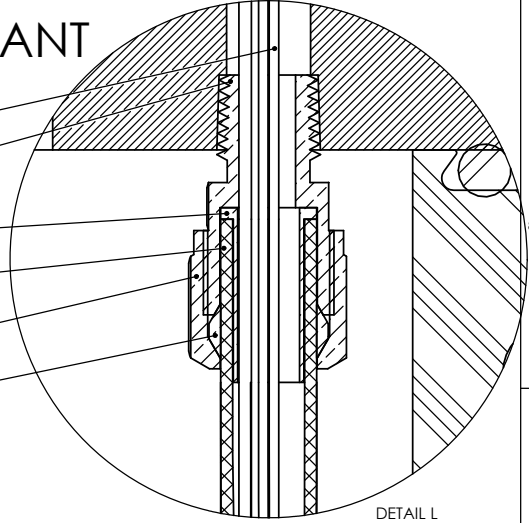
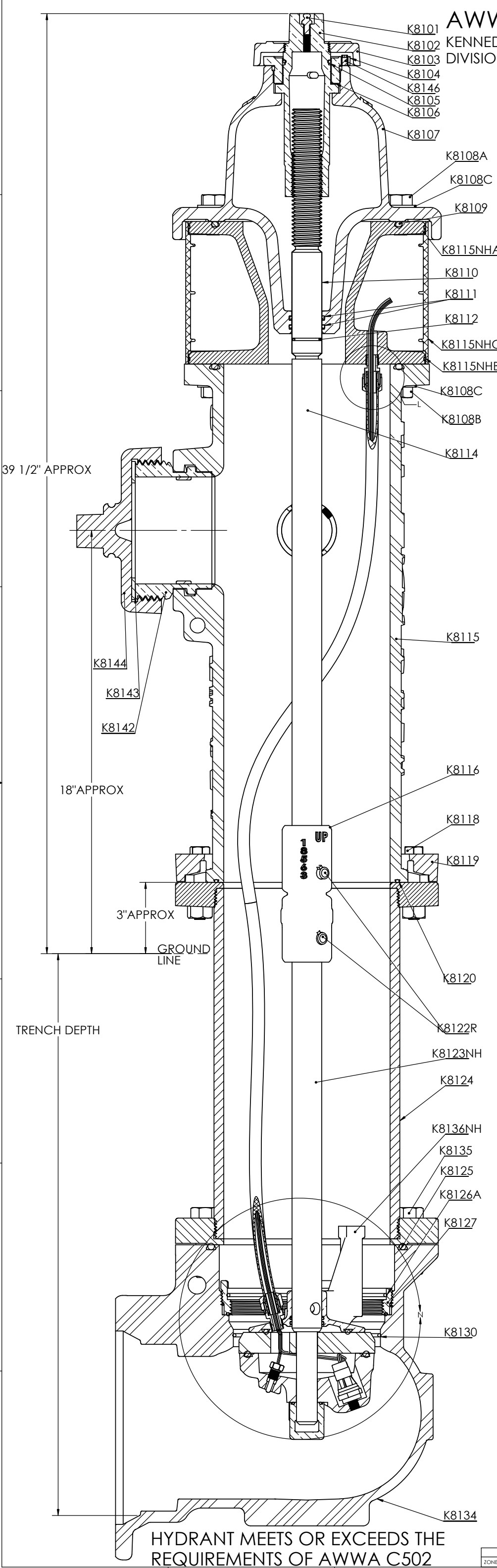


AWWA GUARDIAN i-HYDRANT

KENNEDY VALVE
DIVISION OF McWANE INC.



TWO HOSE & ONE STEAMER OPTION

Accessories

- SEAT REMOVING WRENCH K8147
- NOZZLE REMOVING TOOLS K8258 (ORDER BY NOZZLE I.D.)
- EXTENSION KIT K8150
- COLLISION REPAIR KIT K8149 (INCLUDES PINS & SEALS)

Item No.	Description	Material	ASTM SPEC
K8101	ALEMITE FITTING	STAINLESS STEEL	A276 (304)
K8102	OPERATING STEM NUT	BRONZE	B584 C84400/AWWA GRADE A
K8103	DIRT SHIELD	CAST IRON	A126 CLASS B
K8104	STEM LOCK NUT	BRONZE	B584 C84400/AWWA GRADE A
K8105	O-RING	RUBBER	D2000
K8106	THRUST WASHER	NYLATRON GS	MIL. LP-410
K8107	HYDRANT CAP	CAST IRON	A126 CLASS B
K8108A	CAP BOLTS	STAINLESS STEEL	F593
K8108B	SOCKET HEAD BOLTS	STAINLESS STEEL	F593
K8108C	SEAL WASHERS	STAINLESS STEEL	
K8109	CAP SEAL	RUBBER	D2000
K8110	STEM FERRULE	BRASS	B135 C26000
K8111	O-RING	BUNA-N (SYN. RUBBER)	D2000
K8112	O-RING	BUNA-N (SYN. RUBBER)	D2000
K8114	UPPER STEM	COLD DRAWN STEEL	A108 C1018/C1020
K8115	UPPER BARREL	CAST IRON	A126 CLASS B
K8115NHA	SPOOL	DUCTILE IRON	ASTM 536 70-50-5
K8115NHB	O-RINGS	BUNA-N (SYN. RUBBER)	D2000
K8115NHC	WEATHER GUARD	POLYCARBONATE/ABS BLEND	PC+ABS-FR(40)
K8116	STEMBREAKER COUPLING	CAST IRON	A126 CLASS B
K8118	BOLTS & NUTS	STEEL (ZINC PLATED)	A307/SAE GRADE 2
K8119	BREAKING RING	CAST IRON	A126 CLASS B
K8120	O-RING	BUNA-N (SYN. RUBBER)	D2000
K8122R	COUPLING PINS	STAINLESS STEEL	302 HQ
K8123NH	LOWER STEM	STAINLESS STEEL	A276 (304)
K8124	LOWER BARREL	DUCTILE IRON	ANSI/AWWA C151/A21.5
K8125	ELBOW O-RING	BUNA-N (SYN. RUBBER)	D2000
K8126A	O-RING	BUNA-N (SYN. RUBBER)	D2000
K8127	SEAT RING INSERT	BRONZE	B806 C95400 or B584 C89833
K8128	SEAT RING	BRONZE	B584 C89833 or C87850
K8129	DRAIN TUBE	BRASS	B135 C23000
K8130	O-RING	BUNA-N (SYN. RUBBER)	D2000
K8131NH	MAIN VALVE	EPDM	D2000
K8131NHA	O-RING	RUBBER	D2000
K8132NH	BOTTOM PLATE	CAST IRON	A126 CLASS B
K8132NHA	O-RING	RUBBER	D2000
K8133	DRAIN VALVE PIN	STAINLESS STEEL	410/416
K8134	ELBOW	CAST IRON	A126 CLASS B
K8135	ELBOW NUTS AND BOLTS	STAINLESS STEEL	F593C/F594
K8136NH	DRAIN VALVE	BRONZE	B806 C95400/95500
K8136NHA	O-RING	RUBBER	D2000
K8136NHB	O-RING	RUBBER	D2000
K8137	DRAIN VALVE FACING w/ INSERT	BUNA-N w/ STAINLESS STEEL	D2000/A276 (304)
K8139	NOZZLE CAP CHAIN(NOT SHOWN)	STEEL	A108
K8140	NOZZLE CHAIN BAND(NOT SHOWN)	STEEL	A108
K8141	NOZZLE RETAINING SCREW(NOT SHOWN)	STAINLESS STEEL	A276 (304)
K8142	NOZZLE	BRONZE	B806 C95400 or B584 C89833
K8143	NOZZLE CAP GASKET	NEOPRENE	D2000
K8144	NOZZLE CAP	CAST IRON	A126 CLASS B
K8145	O-RING	BUNA-N (SYN. RUBBER)	D2000
K8146	SET SCREW	STAINLESS STEEL	410
K8151NH	LOCK NUT	BRASS	B584 C89833
K8151NHA	O-RING	RUBBER	D2000
K8152NH	TEMPERATURE SENSOR		
K8153NH	PRESSURE SENSOR		
K8154NHA	COMPRESSION NUT	BRASS: FOR 1/2" TUBE	
K8154NHB	COMPRESSION FERRULE	BRASS: FOR 1/2" TUBE	
K8154NHC	TUBE TO MALE PIPE STRAIGHT ADAPTER	BRASS: 1/2" TUBE X 1 1/4" MNPT	
K8155NH	TUBE SUPPORT	BRASS: FOR 1/2" TUBE	
K8156NH	TUBE	1/2" O.D. X 3/8" I.D. NYLON	

* DENOTES THAT THE PART IS AVAILABLE ONLY AS PART OF AN ASSEMBLY
MUST SPECIFY TYPE OF NOZZLE, HOSE OR STEAMER
+ RECOMMENDED SPARE PARTS

MARKINGS	
FRONT	BACK
CURRENT YEAR	KENNEDY
SIZE	U.S.A.
KENNEDY VALVE LOGO	ELMIRA, NY
KENNEDY	
ELMIRA, NY	AWWA
AWWA	
250 CWP	K81-A

SPECIFICATIONS	
CUSTOMER:	-
SPEC:	-
NO. TURNS/DIRECTION OPEN:	15 1/2 OPEN LEFT
CAP & OP NUT SHAPE:	1-1/2 PENT
HOZE NOZZLE THDS:	(2) -2 1/2" NST PER NFPA 1963 (OTHER THREADS AVAILABLE)
STEAMER NOZZLE THDS:	(1) - 4 1/2" NST PER NFPA 1963 (OTHER THREADS AVAILABLE)
TRENCH DEPTH:	PER CUSTOMER ORDER
SIZE & TYPE OF CONNECTION TO THE MAIN:	6" MECHANICAL JOINT (OTHER END TYPES AVAILABLE)
PAINT:	PER CUSTOMER ORDER
OTHER:	-

UNLESS OTHERWISE SPECIFIED: NAME: DATE: 8/15/2017
 CASTING DIM: 0" - 4" +/- 1/32"
 4" - 8" +/- 3/64"
 8" - 12" +/- 1/16"
 12" - 18" +/- 3/32"
 18" - 24" +/- 1/8"
 RADI: 1/8"
 CHAMF: 1/4"
 MACHINING DIM: DUAL DIM (INCHES/MILL)
 FRACTIONAL: 1/16"
 ANGULAR: ±.5
 RADI: ± 1/32"
 TWO PLACE DECIMAL ±.02
 THREE PLACE DECIMAL ±.005

APPROVED: PK 8/15/18
 CHECKED: JB
 DRAWN: JB

MATERIAL: LBS
 WEIGHT: LBS

KENNEDY VALVE
 Division of McWane, Inc.
 1025 EAST WATER STREET, ELMIRA, NEW YORK 14901

TITLE: K81 NIGHTEWALK ASSEMBLY
 SIZE: PART NO. DWG. NO. REV
 D 81788 02

HYDRANT MEETS OR EXCEEDS THE REQUIREMENTS OF AWWA C502