



KENNEDY VALVE

IN-PLANT VALVE PRODUCTS

CERTIFICATIONS

ISO 9001

ISO 14001

BS OHSAS 18001



AWWA APPROVED



WWW.KENNEDYVALVE.COM



ROTATING DISC GATE VALVES



SOLID WEDGE GATE VALVES



RESILIENT WEDGE GATE VALVES



| Size Range | 3" - 108" | |
|------------|----------------------------------|----------------------|
| | Up to Water Working Pressure psi | Hysrostatic Test psi |
| 3"-54" | 250 | 500 |
| 60"-108" | 250 | 250 |

Available End Connections & Size Range

Flanged End, 3"-108"
M.J. 3"-48"

- Manufactured in accordance to AWWA C-500
- 3"-108" — ASME B16.1 Class 125 flange end connections
- MJ — 3"-48"
- 3"-48" Flanged x MJ — For Tapping Applications
- 3"-48" — ASME B16.1 Class 250 flange end connections available
- Ductile Iron Body and Bonnet construction
- 2" operating nut or hand wheel — Open Left (Black) & Open Right (Red)
- Spurs & Bevel Gears on 14" and larger
- Bypass available
- Integral Casted Flushing Ports available
- Special NSF61 Epoxy Coatings available
- Tracks & Scrapers available
- Disc Face Tracking available

| Size Range | 2" - 108" | |
|------------|----------------------------|----------------------|
| | Water Working Pressure psi | Hysrostatic Test psi |
| 2"-48" | 250 | 500 |
| 54"-108" | 100-150 | 200-300 |

Available End Connections & Size Range

Flanged End, 2"-108"
M.J. 2"-48"

- Manufactured in accordance to AWWA C-500
- 2"-108" — ASME B16.1 Class 125 flange end connections
- MJ — 2"-48"
- 4"-48" — ASME B16.1 Class 250 flange end connections available
- Ductile Iron Body and Bonnet construction
- 2" operating nut or hand wheel - Open Left (Black) & Open Right (Red)
- Spurs & Bevel Gears on 14" and larger
- Bypass available
- Integral Casted Flushing Ports available
- Special NSF61 Epoxy Coatings available
- Rollers, Tracks & Scrapers available

| Size Range | Water Working Pressure psi | Bubble Right Test psi | Hydrostatic Test psi |
|--------------|----------------------------|-----------------------|----------------------|
| 2"-12" AWWA | 250 | 250 | 500 |
| 16"-54" AWWA | 250 | 250 | 500 |
| 2"-12" ULFM | 200 | 250 | 400 |

Available End Connections & Size Range

Floorstands Stem Guides
Indicator Posts Floor Boxes
Electric Actuators Chainwheels
Manual Operators 2" Operating Nuts
Extension Stems Handwheels
"T" Handles

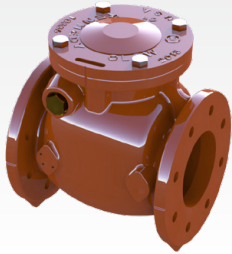
For additional accessories, please contact your local representative.

- Manufactured in accordance to AWWA C-509 & C-515
- 2"-54" — ASME B16.1 Class 125 flange end connections
- 2"-48" MJ
- 2-1/2"-24" — ASME B16.1 Class 250 flange and connections available
- Cast Iron or Ductile Iron Construction
- Rated at 250 psi — "Bubble Tight" — zero leakage
- 2" operating nut or Handwheel — Open Left (Black) & Open Right (Red)

For additional end connections, please contact your local representative.

For vertical flow applications, please contact KENNEDY VALVE.

SWING CHECK VALVES



| Size Range | Up to Water Working Pressure psi | Hydrostatic Test psi |
|------------------------------------|----------------------------------|----------------------|
| 2"-12" | 200 | 400 |
| 14"-36" | 150 | 300 |
| Horizontal / Vertical Installation | | |

Available End Connections
ASME B16.1 Class 125 Flanges

Accessories

| | |
|---------------------------------|---------------------------------------|
| Bronze or Resilient Seating | Outside Lever & Weight |
| Stainless Steel Seats Available | Outside Lever & Spring Limit Switches |
| | Air Cushion |

INCREASING SWING CHECK VALVES



| Size Range | |
|------------------------------------|----------|
| 4" x 6" | 4" x 8" |
| 6" x 8" | 6" x 10" |
| 8" x 10" | 8" x 12" |
| 10" x 12" | |
| Horizontal / Vertical Installation | |

Available End Connections
ASME B16.1 Class 125 Flanges

Accessories

Outside Lever & Weight
Outside Lever & Spring
Limit Switches
Bronze or Resilient Seating

KENFLEX RESILIENT SEATED CHECK VALVES



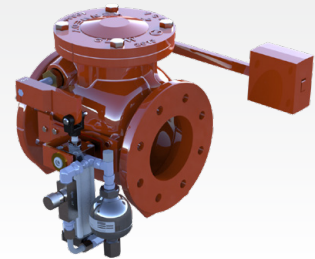
| Size Range | Up to Water Working Pressure psi | Hydrostatic Test psi |
|------------|----------------------------------|----------------------|
| 4"-12" | 250 PSI | 500 |

Accessories

Back Flush Jack Screw Available
External Position indicator with spring control

NEW PRODUCT OFFERINGS

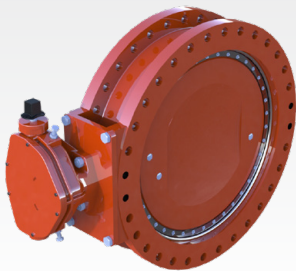
OIL CUSHION CHECK VALVE



| Size Range | Up to Water Working Pressure psi | Hydrostatic Test psi |
|------------|----------------------------------|----------------------|
| 3"-12" | 200 PSI | 400 |

- AWWA C508
- ASME B16.1 Class 125 Flanges
- Full waterway
- High strength corrosion-resistant hinge pin
- Valve may be installed in vertical line (Flow Up)
- Internal working parts are removable through top of valve
- Interior / exterior fusion-bonded epoxy with accumulator
- Disc movement controlled through closed oil system with adjustable speed control valve when closing
- Opens freely as reversible oil flow passes through check / flow control valve
- Close speed adjustable through flow control valve
- Stainless steel hardware throughout system

BUTTERFLY VALVES



| Size Range | 3"-108" | |
|------------|----------------------------|----------------------|
| | Water Working Pressure psi | Hydrostatic Test psi |
| 3"-120" | 150 | 300 |

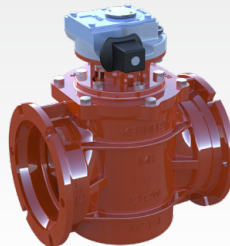
Available End Connections & Size Ranges

Flanged End 3"-120"
M.J. 4"-48"
3"-120" — ASME B16.1 Class 125 flange end connections
3"-54" — ASME B16.1 Class 250 flange end connections available

Accessories

| | |
|-----------------------|--------------------------|
| Floorstands | Extended Bonnet |
| Extension Stems | Electric Motor Actuators |
| 2" S1. Operating Nuts | Cylinder Actuators |
| Handwheels | Limit Switches |
| Lever Wrench Head | Stem Guides |
| Chainwheels | Floor Boxes |
| Worm Gear Actuators | Chainlevers |

ECCENTRIC PLUG VALVES



| Size Range | 3"-48" | |
|---------------------|----------------------------|----------------------|
| | Water Working Pressure psi | Hydrostatic Test psi |
| 3"-12" | 175 | 350 |
| 14"-48" | 150 | 300 |
| 100% Port Available | | |

Available End Connections & Size Ranges

Flanged End 3"-48"
M.J. 3"-48"
3"-48" — ASME B16.1 Class 125 flange end connections available

Accessories

| | |
|-----------------------|--------------------------|
| Floorstands | Extended Bonnet |
| Extension Stems | Electric Motor Actuators |
| 2" S1. Operating Nuts | Cylinder Actuators |
| Handwheels | Limit Switches |
| Lever Wrench Head | Stem Guides |
| Chainwheels | Floor Boxes |
| Worm Gear Actuators | Chainlevers |

MUD VALVES



| Size Range | Working Pressure |
|------------|--|
| 4"-30" | Recommended for use in lines of low seating or unseating pressures only. |

Stainless Steel also available.

Available End Connections & Size Ranges
 Flanged End, Non-Rising Stem 4"-30"
 Flanged End, Rising Stem 4"-30"

Available in either nonrising or rising.

NOTE: Flanged ends are faced and drilled to ANSI Class 125 drilled template except holes under yoke where attached to flange are omitted.

Accessories

- Handwheels
- "T" Handles
- Floorstands
- Electric Motor with Extension Stem
- Extension Stems
- Manual Actuator
- Stem Guides
- Floor Boxes
- 2" Square Operating Nut

FLOOR TYPE PRESSURE RELIEF VALVES



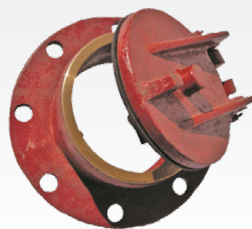
| Standard Body Length (inches) |
|-------------------------------|
| 8" |

Pressure: The cover for the Pressure Relief Valve weighs approximately 6 pounds and starts to open at a head of approximately 9" of water.

Installation: In order for the F-1293T Floor Type Valve to operate correctly, it must be installed in a vertical position.

Length can be increased to desired dimension by adding PVC or Ductile Iron pipe into body.

PRESSURE RELIEF VALVES (WALL TYPE)



End Connection & Size
 Flange 4"-6"
 Bronze to Resilient Seating

Accessories
 4" x 6" F-1496T Wall Pipe with Grate

SHEAR GATE VALVES



| Size Range | Working Pressure |
|------------|--|
| 4"-30" | Recommended for use in lines of low seating or unseating pressures only. |

F3000-T

Available End Connections & Size Ranges
 Flanged End Frame 4"-30"

NOTE: Flanged ends are faced and drilled to ANSI Class 125 drilled template.

Accessories

Lifting handles and hooks

NOTE: Seating pressure is pressure tending to push gate to seat.

FLAP VALVES



| Size Range | Working Pressure |
|------------|---|
| 4"-30" | Valves unseat and swing open under unseating pressure to release the outfall fluid and close when pressure is relieved. |

F3012-T

Available End Connections & Size Ranges
 Flanged End 4"-30"

Bronze to Bronze Seating



ACTUATION

KENNEDY VALVE has furnished valves with many assorted types of motorized actuators to operate our valves. The gate valves use multi-turn and eccentric / butterfly valves use a quarter (1/4) turn unit to operate.

KENNEDY VALVE engineers have extensive experience with electric, pneumatic, and hydraulic actuators on our valve products. Some of the more prominent actuators that we have recently used on some major treatment plant projects are:

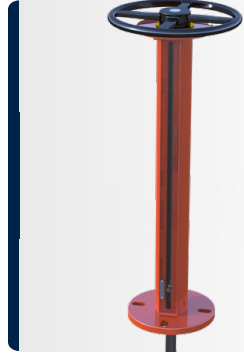


Optional accessories include intermediate position limit switches, position feedback devices, and integral motor controls. Generally, motor controls consist of reversing starters, control transformer, push buttons, selector switches, and indicating lights. For these applications requiring control by an analog signal (usually 4-20 mADC), a positioner can be furnished with motor controls.

All electric actuators contain the following standard accessories: a handwheel for manual operation, open and close position limit switches to assure motor shutoff at the ends of travel, open and close torque limit switches to protect the valve from excessive actuator torque and a separate drive nut or coupling. The motors have been designed for high starting torque and long service life. Quarter turn actuators are furnished with adjustable end of position mechanical stops. Remote stations can be furnished as required.

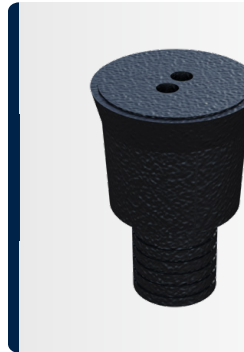
ACCESSORIES

FLOORSTANDS



F5500-T Standard Pattern N.R.S.
F5505-T Standard Pattern N.R.S.
Indicating

FLOORBOX



F5695
Bushed
Min. Length 8"
Max. Length 12"
Max. Stem Dia 1-3/4"

EXTENSION STEMS

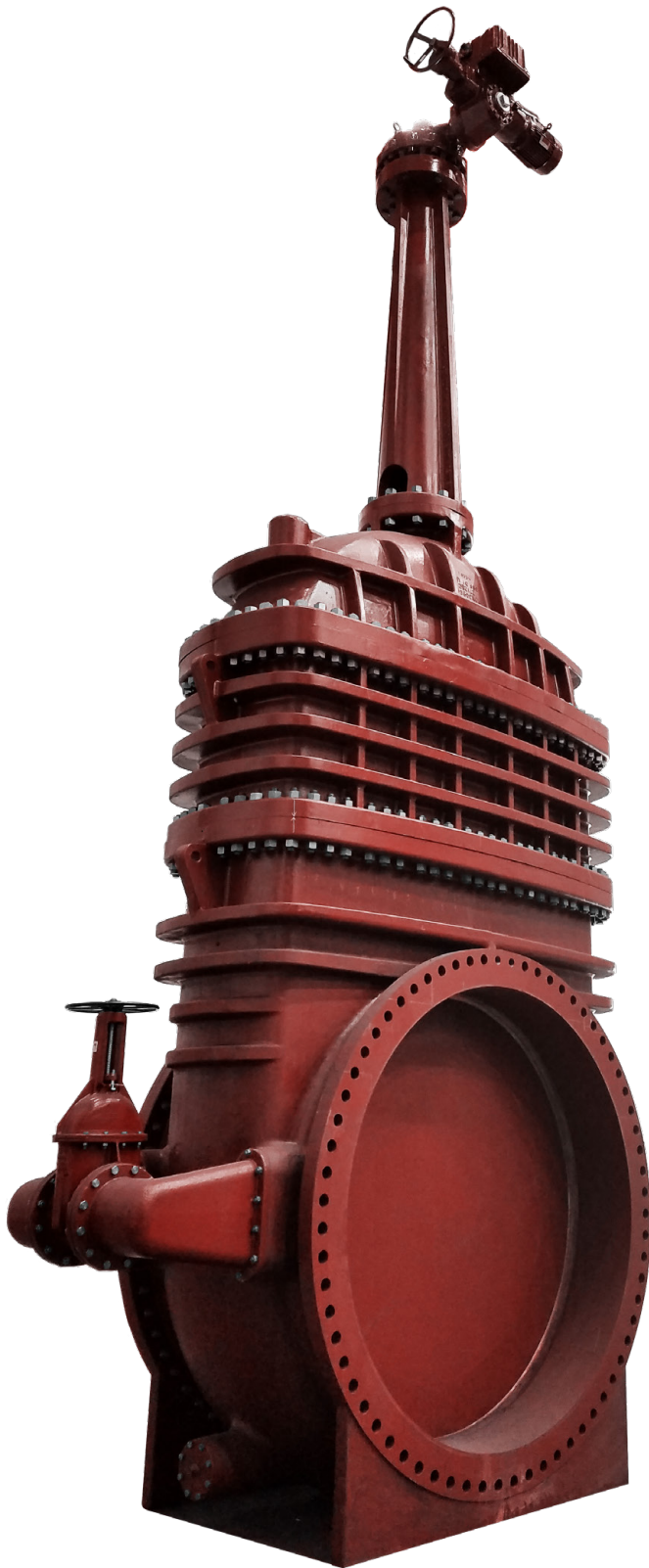


Diameters up to 2-1/2"
Any Length

STEM GUIDES



| Size Range | Minimum Length | Maximum Length |
|------------|----------------|----------------|
| #3 | 2-1/2" | 17" |
| #5 | 15" | 24" |
| #6 | 24" | 36" |



96" ROTATING DISC GATE VALVE



KENNEDY VALVE

ORDERING INFORMATION

PH: 800-782-5831
607-734-2211
FAX: 800-952-4771

SALES@KENNEDYVALVE.COM
WWW.KENNEDYVALVE.COM

KENNEDY VALVE

1021 E. WATER ST.
ELMIRA, NY
14902-1516



For Generations