



KENNEDY VALVE



AWWA

2.5”-12” Resilient Seated Gate Valve Model KS RW High Pressure Class 250 Flanges General Dimensions

Note: Conforms to dimensional, material, and test requirements 350 PSI rating.

AWWA C515 - Model “KS RW”

AWWA C509 - Model “KS FW” in Ductile ASME B16.1 Class 250 Flanges

2” OS&Y Flanged and Threaded versions are UL Listed

2” - 3” sizes full wall ductile iron (per AWWA C509 dimensions)

END CONNECTIONS	STEM TYPE	SIZE RANGE	FIGURE NO.
Flanged Ends	Non-Rising (w/ post plate)	2.5”-3”	5158
Flanged Ends	Non-Rising (w/ post plate)	4”-12”	5158
Flanged Ends	OS&Y	2.5”-3”	5168
Flanged Ends	OS&Y	4”-12”	5168
Flanged Ends	Non-Rising (w/o post plate)	2.5”-3”	5058
Flanged Ends	Non-Rising (w/o post plate)	4”-12”	5058

SIZE RANGE	WATER WORKING PRESSURE PSI	SEAT TEST PSI	HYDROSTATIC SHELL TEST PSI
AWWA 2”-12”	350 Water Work	350	700
ULFM 2.5”-12”	350 Fire Protection	525	700

ACCESSORIES

- | | |
|-----------------------|-------------------------------|
| Indicator Posts | Floorstands (Non-Rising Stem) |
| “T” Handles” | Handwheels |
| Stem Guides | Extension Stems |
| 2” Sq. Operating Nuts | Chain Wheels |



KENNEDY VALVE



AWWA

2.5"-3" Resilient Seated Gate Valve KS FW High Pressure Non-Rising C509 Flanged Ends General Dimensions

Fig. 5158

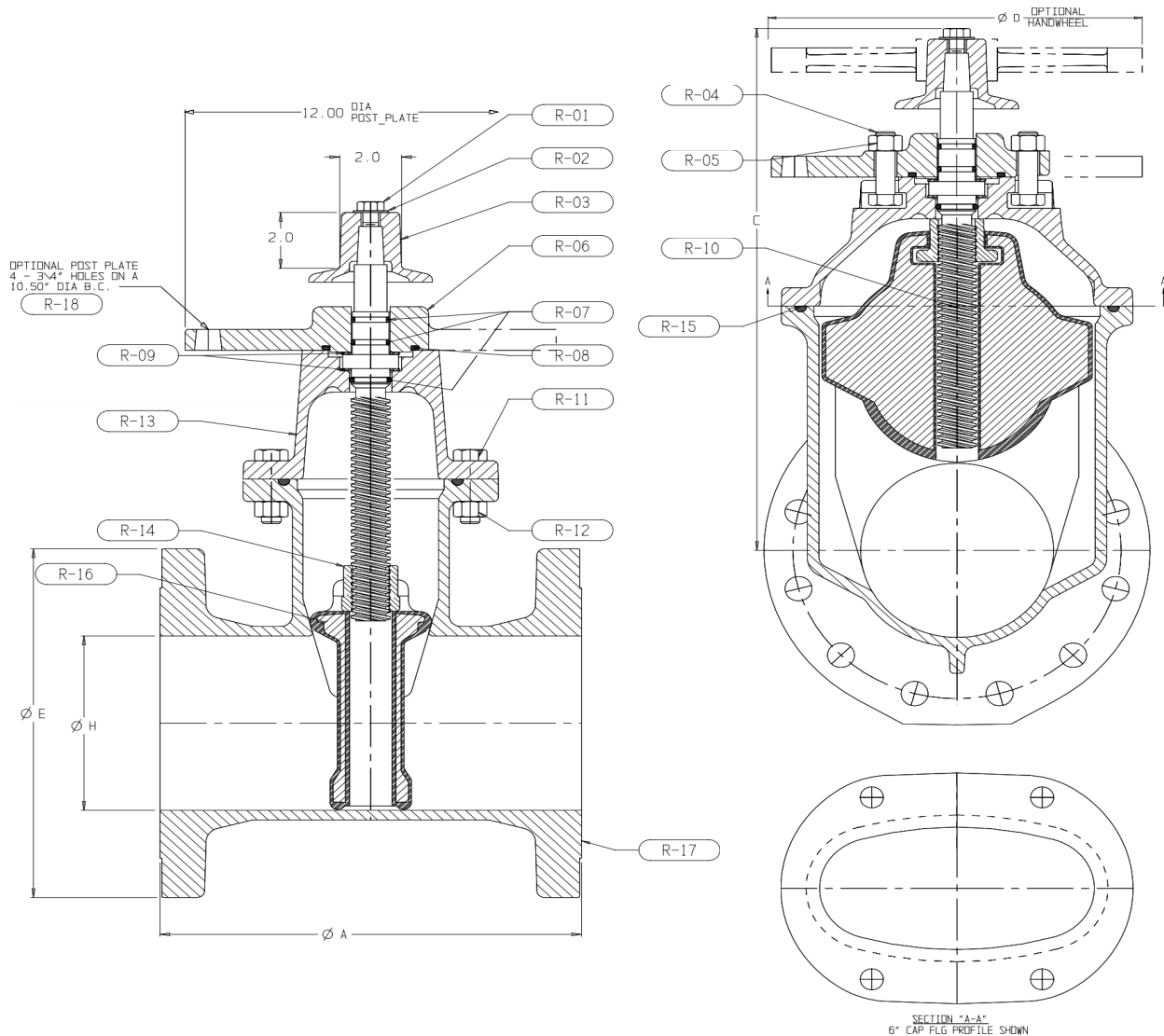
Note: Conforms to dimensional, material, and test requirements 350 PSI rating.

AWWA C509 - Model "KS FW" in Ductile ASME B16.1 Class 250 Flanges

2" OS&Y Flanged and Threaded versions are UL Listed

2" - 3" sizes full wall ductile iron (per AWWA C509 dimensions)

* UL listing refers to 3" Gate Valve.



Nominal Size	Clear Dia H	No. of Turns to Open	Valve Dimensions						
			A	C	DØ	EØ	Size of Bolts FØ	No. of Bolts F#	Bolt Circle
2.5"	3.15"	10	8.63"	12.38"	10"	8.25"	3/4"	8	5.875
3"	3.15"	10	8.63"	12.38"	10"	8.25"	3/4"	8	6.625



KENNEDY VALVE

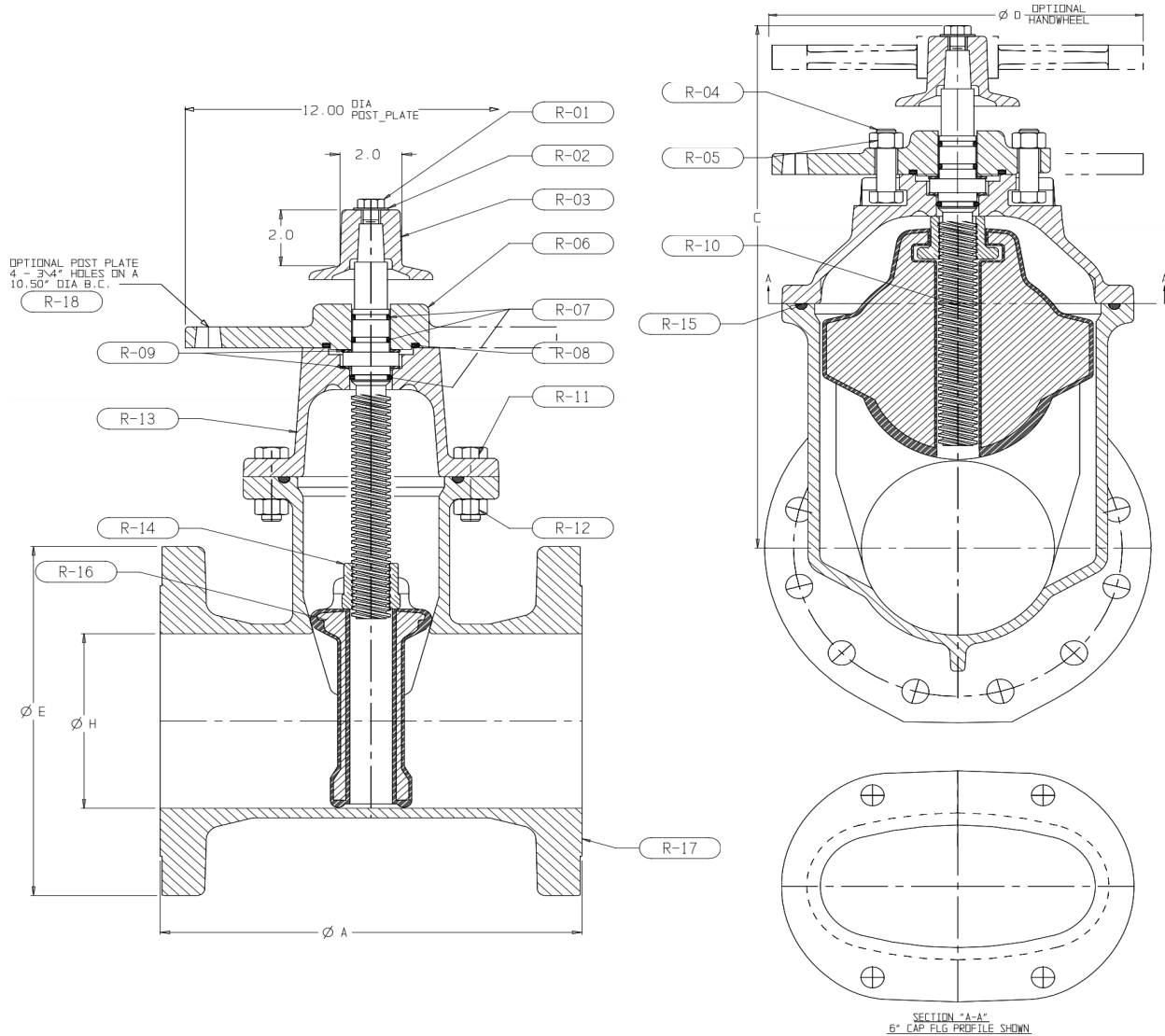
4"-12" Resilient Seated Gate Valve KS RW High Pressure Non-Rising C515 Flanged Ends General Dimensions



AWWA

Fig. 5158

Note: Conforms to dimensional, material, and test requirements 350 PSI rating.
AWWA C515 - Model "KS RW"
Class 250 Flanges



Nominal Size	Clear Dia H	No. of Turns to Open	Valve Dimensions						
			A	C	DØ	EØ	Size of Bolts FØ	No. of Bolts F#	Bolt Circle
4"	4.25"	13	11.75"	14.75"	10"	10.00"	3/4"	8	7.875
6"	6.25"	19	13.63"	19.00"	12"	12.50"	3/4"	12	10.62
8"	8.25"	25	14.13"	22.50"	14"	15.00"	7/8"	12	13.00
10"	10.25"	31.5	14.30"	35.38"	18"	17.50"	1"	16	15.25
12"	12.25"	37.75	15.38"	40.63"	18"	20.50"	1-1/8"	16	17.75



KENNEDY VALVE



AWWA

2.5"-3" Resilient Seated Gate Valve KS FW High Pressure OS&Y C509 Flanged Ends General Dimensions

Fig. 5168

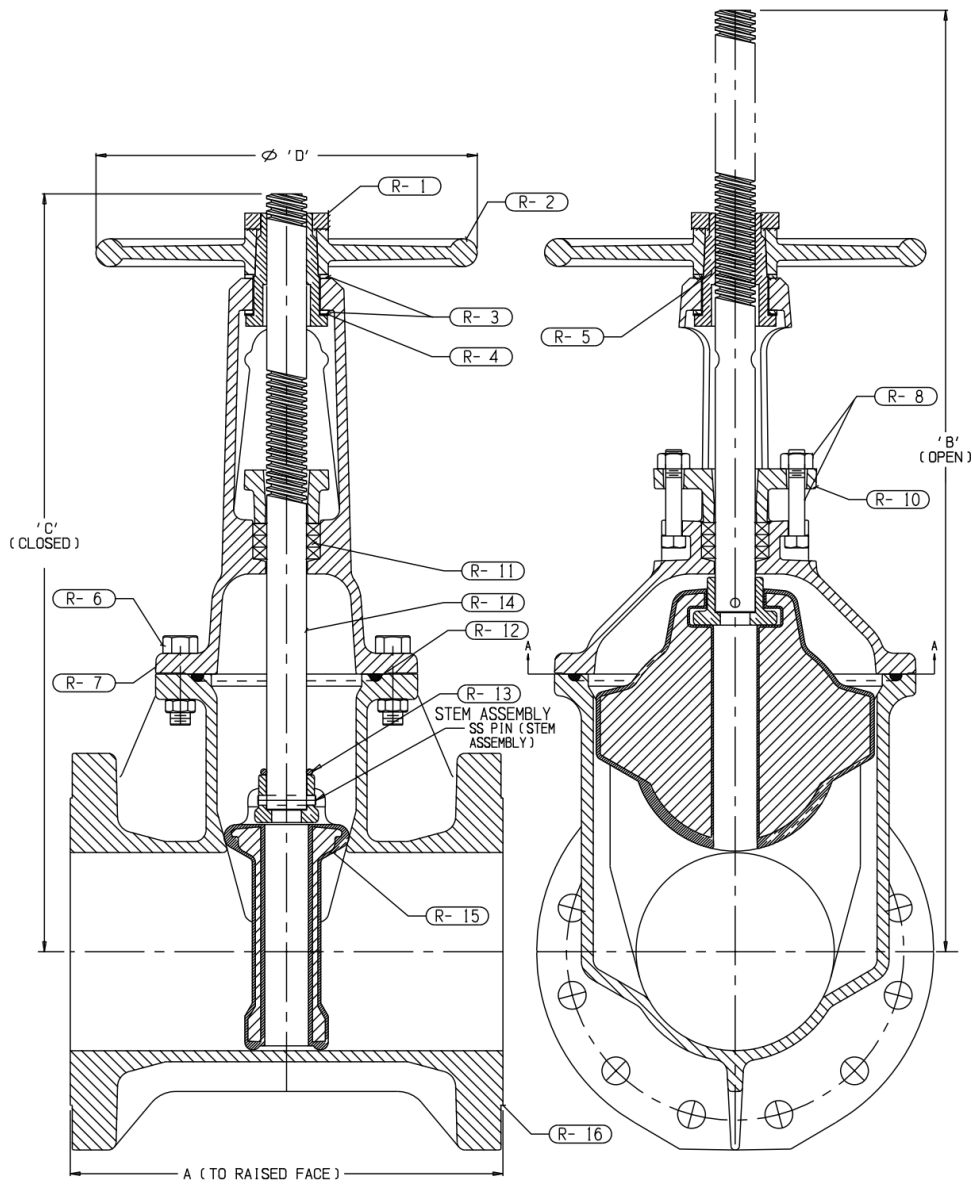
Note: Conforms to dimensional, material, and test requirements 350 PSI rating.

AWWA C509 - Model "KS FW" in Ductile ASME B16.1 Class 250 Flanges

2" OS&Y Flanged and Threaded versions are UL Listed

2" - 3" sizes full wall ductile iron (per AWWA C509 dimensions)

* UL listing refers to 3" Gate Valve.



SIZE	A	B	C	D	TURNS TO OPEN
2.5"	8.63"	18-7/8"	15-5/8"	10"	10
3"	8.63"	18-7/8"	15-5/8"	10"	10



KENNEDY VALVE



LISTED



APPROVED



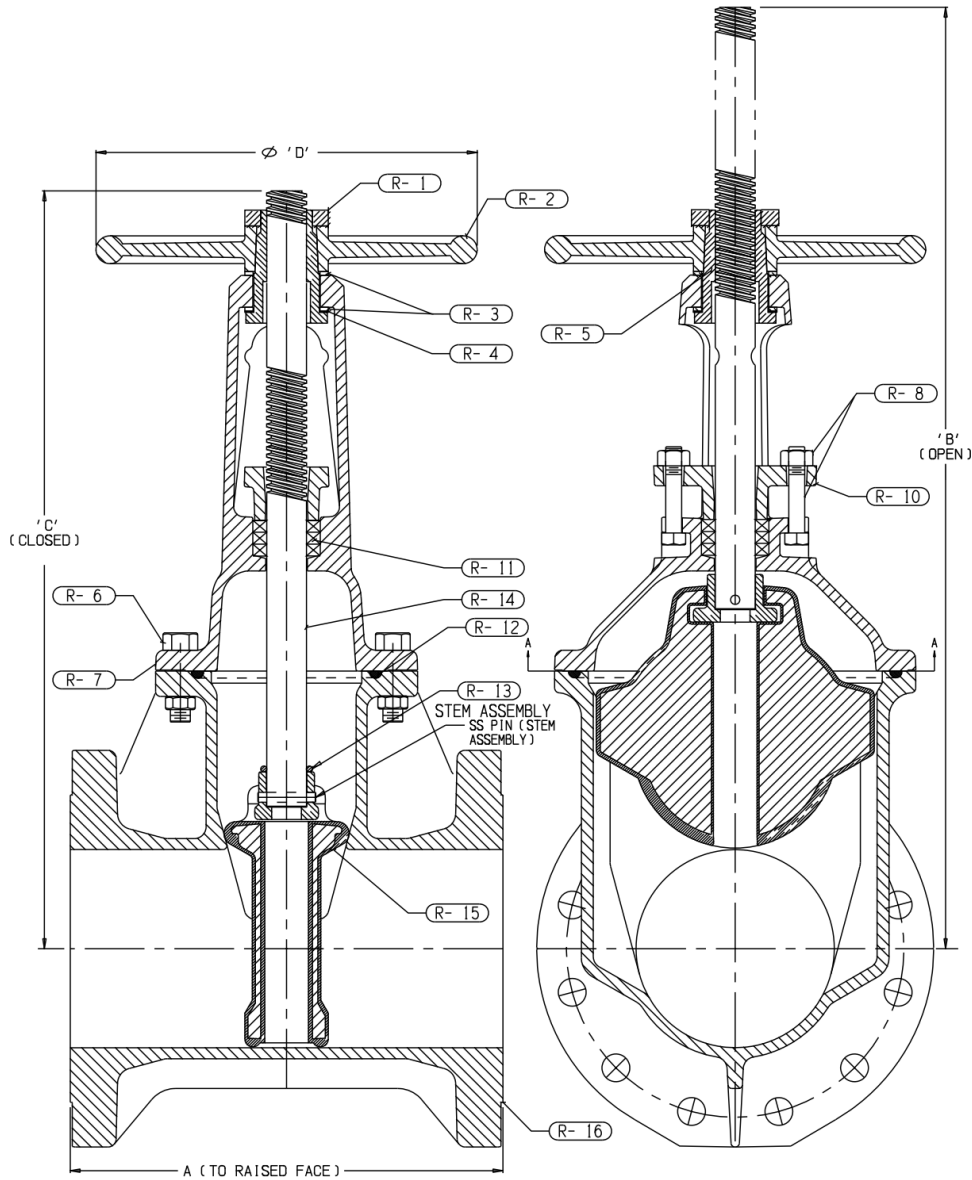
Certified to ANSI/NSF-61

AWWA

4"-12" Resilient Seated Gate Valve KS RW High Pressure OS&Y C515 Flanged Ends General Dimensions

Fig. 5168

Note: Conforms to dimensional, material, and test requirements 350 PSI rating.
AWWA C515 - Model "KS RW"
Class 250 Flanges



SIZE	A	B	C	D	TURNS TO OPEN
4"	11.75"	22-3/4"	18-1/4"	10"	13.5
6"	13.63"	30-1/8"	23-3/4"	12"	19.5
8"	14.13"	37-3/4"	29-1/4"	14"	25.5
10"	14.30"	45-3/4"	35-3/8"	18"	31.5
12"	15.38"	53-1/8"	40-5/8"	18"	37.75