

**KENNEDY VALVE WALL TYPE
PRESSURE RELIEF VALVES**

KENNEDY VALVE

F-1494

End Connections & Size
Flange: 4"

Figure No. F-1494

Accessories:

4" F-1496 Wall Pipe with Grate

Wall Pipe Length (inches)	22
Approx. Weight - Pounds	43

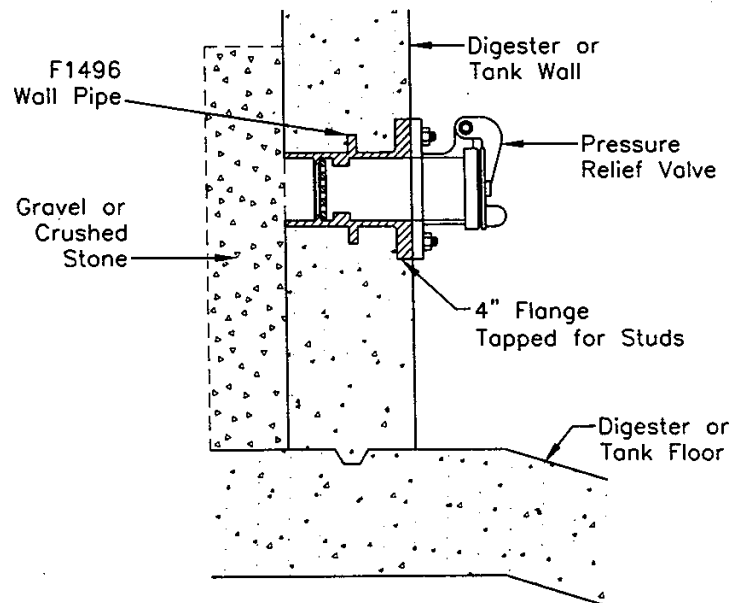
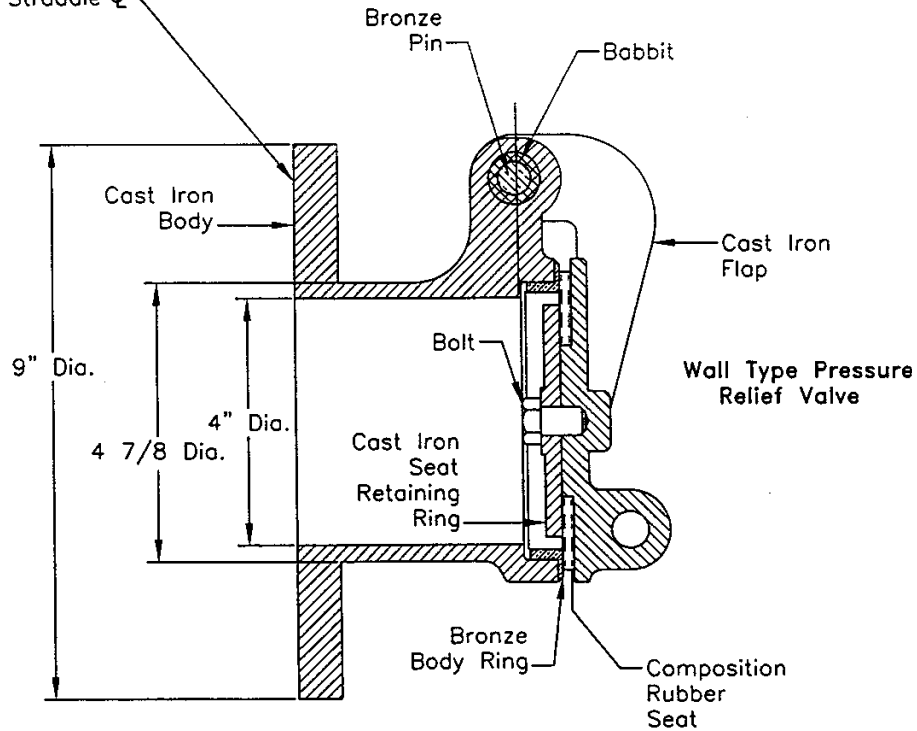
NOTE: WALL PIPE FURNISHED IN 22-INCH LENGTH
MAY BE CUT TO SHORTER LENGTHS IN FIELD

WALL TYPE PRESSURE RELIEF VALVES CROSS SECTION & PARTS LIST

KENNEDY VALVE

F-1494

8-3/4" Holes on
7 1/2" Dia. B.C.
Holes Straddle \bar{C}



**SUGGESTED SPECIFICATIONS
KENNEDY VALVE 4" WALL TYPE
PRESSURE RELIEF VALVES**

KENNEDY VALVE

Specifications

The wall type hydrostatic pressure relief valve shall be suitable for side wall installation in tanks and digesters.

The valve shall be of the vertical seat design with offset single pivoted hinge.

The assemble shall consist of five parts: flap gate, body gate seat retainer plate, hinge pin and body seat ring.

The flap gate, body and gate seat retainer plate shall be of cast iron conforming to ASTM specifications A-126 Class B.

The body seat ring and hinge pin shall be furnished of bronze.

The gate shall have a neoprene rubber seat cemented and mechanically retained in place by a cast iron retainer plate. The body seat ring shall be threaded and screwed into place and the face machined to a smooth finish.

The valve shall have a 4" flanged end faced and drilled to ANSI 125 pound template for connection to a 4" wall pipe.

Wall type pressure relief valves shall be manufactured by Kennedy Valve or approved equal.



Kennedy Valve

A DIVISION OF McWANE, INC.

www.kennedyvalve.com

1021 E. Water Street • Elmira, New York 14901
P.O. Box 981
PHONE: (607) 734-2211 • FAX: 1-800-952-4771